

Riverboxes™  
PASSPORT  
FIELD BOOK



*where geocaching meets public art*

dublin  council

## TABLE OF CONTENTS

- 3 Introduction and Etiquette
- 5 Riverbox Collection Map
- 7 Riverside Crossing Park: *Equal East*
- 8 Dublin Spring Park: *Equal West*
- 9 Dublin Spring Park: *Ghost Tree Sprout*
- 10 Kiwanis Riverway Park: *Vigilant Vegetation II*
- 11 Kiwanis Riverway Park: *The Nest II*
- 12 Ferris-Wright Park: *Nero<sup>3</sup>*
- 13 Dublin Arts Council: *D'Art's No-Litter Cat Box*
- 14 Dublin Arts Council: *Riverbox of the Sun*
- 15 Dublin Arts Council: *The Riparian*
- 16 Scioto Park: *Big Turtle*
- 17 Scioto Park: *House of Spirits*
- 18 Donegal Cliffs: *Caementum Charta (CeeCee) II*
- 19 Amberleigh Park: *Soft Rock*
- 20 Amberleigh Park: *House of the Rising Water*
- 21 Indian Run meadows Park: *Sentinel*
- 22 Ted Kaltenbach Park: *Among the Wildflowers*
- 23 Passport redemption
- 24 What is a Geocoin?
- 25 Riverboxes™ Challenge Pathtag
- 26 About the Dublin Limerick Adventure Lab Pathtag
- 27 About Dublin Arts Council and supporters

# Riverboxes™

*where geocaching meets public art*

Dublin Arts Council has commissioned the creation of Riverboxes™, artist-created vessels inspired by public art, geocaching and the artistic pursuit of 'treasure hunts' in beautiful, scenic places.

## *Riverboxes Etiquette and Disclaimer:*

- Riverboxes are works of public art and are located in natural environments along the Scioto River and its tributaries. They are created for the enjoyment of all. Please respect the artworks, flora and fauna and leave them as you found them.
- Riverboxes are found outdoors near water environments. As weather and terrain conditions may vary, it is the responsibility of Riverbox explorers to adequately prepare for the search and conduct themselves with respect to safety, personal abilities and limitations.
- Do not let children search for Riverboxes unsupervised.
- By utilizing Riverbox clues, the searcher acknowledges the potential risk of the search and accepts responsibility for their own actions, holding harmless Dublin Arts Council and Riverbox supporters.

## COLLECT THEM ALL!

### Limited edition geocoin

Visit all 16 Riverboxes, collect ink stamps and redeem.

### Riverboxes™ Challenge Pathtag

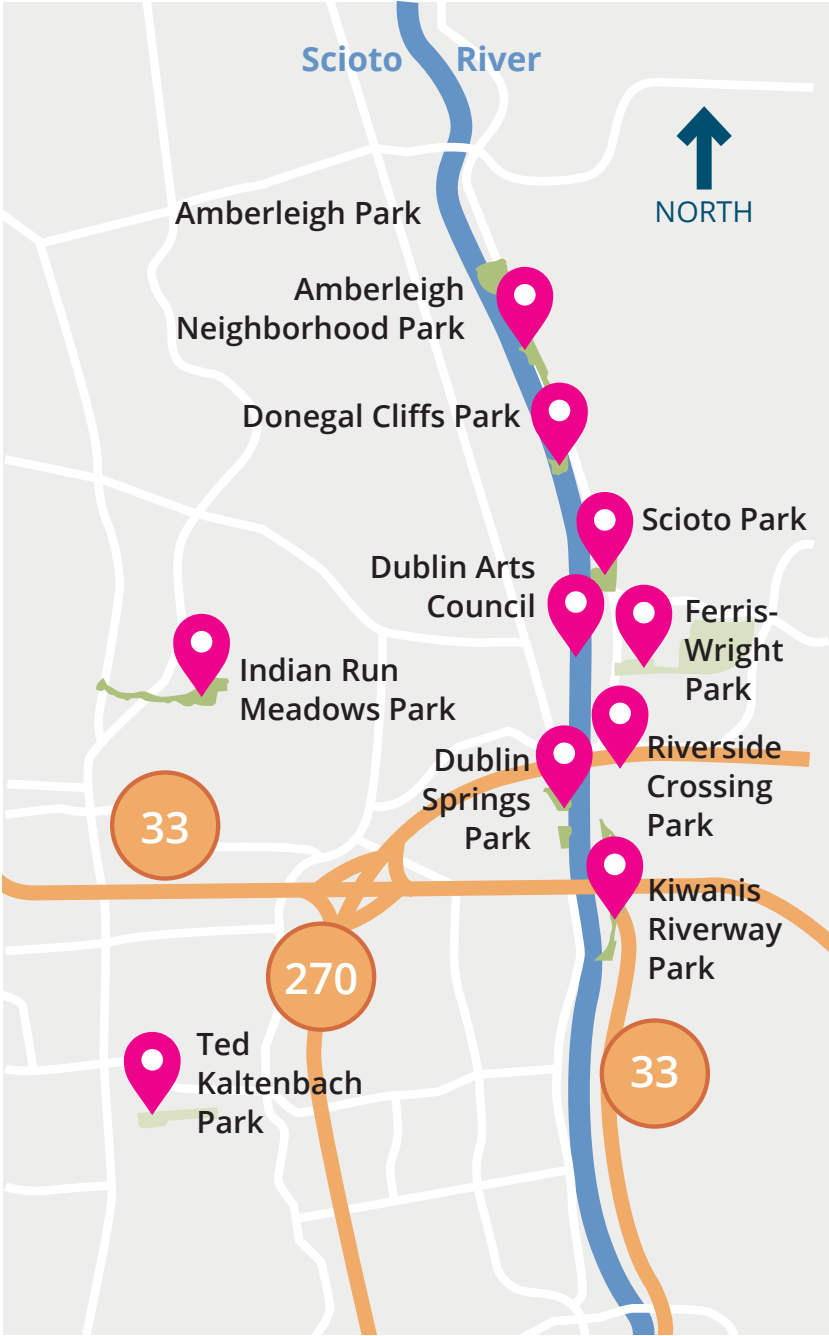
Visit all 16 Riverboxes and earn this pathtag created with connecting the east and west side of Dublin, Ohio in mind. *More information on page 22.*

### Dublin Limerick Adventure

Download the Adventure Lab app. Complete the five-stage Dublin Limerick Adventure Lab and earn a pathtag. *More information on page 23.*

## FOLLOW THESE TIPS:

1. Bring your own ink pad they dry out quickly (hint: use a few drops of water)
2. If there is not a GC code associated with a Riverbox, it's not a published letterbox on geocaching.com due to proximity rules.
3. If a stamp or ink pad is missing, feel free to sketch the stamp or make a note inside the square in your passport.



*All parks located in Dublin, Ohio*

**Riverside Crossing Park:**

6635 Riverside Dr.

*Equal East*

**Amberleigh Neighborhood Park:**

8100 Carrigan Ridge Ct.

*House of the Rising Water*

**Donegal Cliffs Park:**

4460 Donegal Cliffs Dr.

*Caementum Charta (CeeCee) II*

*Soft Rock*

**Scioto Park:**

7377 Riverside Dr.

*Big Turtle*

*House of Spirits*

**Dublin Arts Council:**

7125 Riverside Dr.

*D'Art's No-Litter Cat Box*

*Riverbox of the Sun*

*The Riparian*

**Ferris-Wright Park:**

4400 Emerald Pkwy.

*Nero<sup>3</sup>*

**Indian Run Meadows Park:**

6675 Fallen Timbers Dr.

*Sentinel*

**Dublin Springs park:**

Historic Dublin, South Riverview

at Spring Hill

*Ghost Tree Sprout*

*Fly Away Home*

*Equal West*

**Dublin Kiwanis Riverway Park:**

6245 Riverside Dr.

*Vigilant Vegetation II*

*The Nest II*

**Ted Kaltenbach Park:**

5985 Cara Rd.

*Among the Wildflowers*

# Equal East

by artist Don Staufenberg

## RIVERSIDE CROSSING PARK, 6635 RIVERSIDE DR.

Park in a public spot in the new Bridge Park Development. There are three parking garages along Longshore Street.

**PARKING  
COORDINATES:  
N 40° 06.105'  
W 083° 06.557'**

**GPS  
COORDINATES:  
N 40° 06.206'  
W 083° 06.689'**



**GC CODE:  
GC9RFVN**



## CLUES

Approach the pedestrian bridge but rather than walking across, follow the stairwell down to the paved path below.

Walk north toward the site where bicycles, joggers, and strollers fork in different directions.

Look for a brilliant white form nestled along the tree line and the river's edge.

*Equal East*

~STAMP~

# Equal West

by artist Don Staufenberg

## DUBLIN SPRINGS PARK, HISTORIC DUBLIN, 20 S. RIVERVIEW ST.

There is NO PUBLIC PARKING on South Riverview. Please park in a public lot in Historic Dublin (coordinates given for library parking garage) and walk to the park.

**PARKING COORDINATES:**  
**N 40° 06.091'**  
**W 083° 06.925'**

**GPS COORDINATES:**  
**N 40° 05.959'**  
**W 083° 06.717'**



**GC CODE:**  
**GC9NAYM**



### CLUES

Walk south from the library on High St., then east on Spring Hill St. toward the Scioto River.

The park is accessible at the north end of South Riverview via a wooden stairway.

Follow the path down to the river.

Look south of the gazebo, keeping your eyes open for the confluence of concrete, metal and wood.

*Equal West*

~STAMP~



# Ghost Tree Sprout

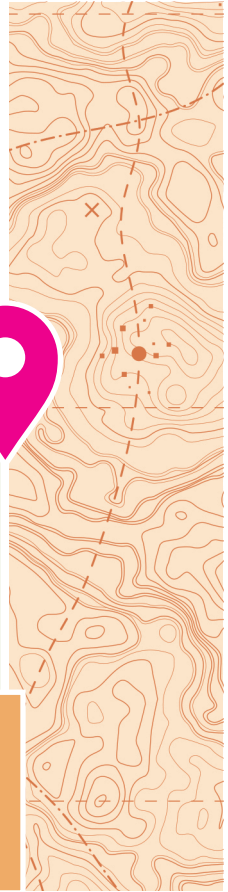
by artist Angelica Pozo

## DUBLIN SPRING PARK, HISTORIC DUBLIN, 20 S. RIVERVIEW ST.

There is NO PUBLIC PARKING on South Riverview. Please park in a public lot in Historic Dublin (coordinates given for library parking garage) and walk to the park.

**PARKING  
COORDINATES:  
N 40° 06.091'  
W 083° 06.925'**

**GPS  
COORDINATES:  
N 40° 05.960'  
W 083° 06.712'**



*Ghost Tree Sprout*

~STAMP~



## CLUES

Walk under the structure that connects both east and west shores.

Continue in the direction the river flows.

At the fork in the road, look toward the opposite shore.

# Vigilant Vegetation II

by artist Jean Magdich



## KIWANIS RIVERWAY PARK

Parking is limited.  
Dublin parks are open dawn to dusk.

**PARKING  
COORDINATES:**  
N 40° 05.803'  
W 083° 06.528'

**GPS  
COORDINATES:**  
N 40° 05.708'  
W 083° 06.574'

**GC CODE:  
GC8KM4X**

*Vigilant Vegetation II*

~STAMP~



## CLUES

Enter the park and continue down and around the curvy path.

Take note as you pass over the first short bridge.

Continue across a second, long bridge and follow the path to the right at the bridge's end.

Just before the third bridge, follow the fisherman's path toward the water, where you'll find Vigilant Vegetation keeping watch over the river along with his new fledgling!

# The Nest II

by artist Julia LaBay Darrah

**KIWANIS RIVERWAY PARK  
6245 RIVERSIDE DR.**

Parking is limited.  
Dublin parks are open dawn to dusk.

**PARKING  
COORDINATES:  
N 40° 05.803'  
W 083° 06.528'**

**GPS  
COORDINATES:  
N 40° 05.850'  
W 083° 06.600'**



**GC CODE:  
GC8DTV**

*The Nest II*  
~STAMP~



## CLUES

- Park in the upper parking lot.
- Enter the park and continue down around the curvy path.
- Head north when you reach the fork in the road.
- Travel over where the water flows, then continue down the hill to the bend in the road.
- Look closely and beneath the vegetation you'll find a place of protection from the outside world.

# Nero<sup>3</sup>

by artist Giancarlo Calicchia

**FERRIS-WRIGHT PARK  
4400 EMERALD PKWY.**

Ample parking.  
Dublin parks are open dawn to dusk.

**PARKING  
COORDINATES:  
N 40° 06.667'  
W 083° 06.376'**

**GPS  
COORDINATES:  
N 40° 06.703'  
W 083° 06.431'**



**GC CODE:  
GC90E8H**



*Nero<sup>3</sup>*  
~STAMP~



## CLUES

Head west from the parking lot and cross the bridge.

Take an immediate left to pass the stones and look for the gathering of five tree trunks.

If you've passed the silo, you've gone too far.

At the trees, take the small footpath toward the babbling brook.

There you'll find what you are looking for.

# D'Art's No Litter Box

created by DAC staff

**DUBLIN ARTS CENTER  
7125 RIVERSIDE DR.**

Plenty of parking is available; check with DAC for hours of operation. (You may park in driveway if gate is closed.)

**PARKING  
COORDINATES:  
N 40° 06.735'  
W 083° 06.661'**

**GPS  
COORDINATES:  
N 040° 06.746'  
W 083° 06.625'**



**GC CODE:  
GC492KD**

*House of Spirits*  
~STAMP~



## CLUES

Pull into the drive of 'the "castle" along the river.

Walk to the green lawn just north of the barrier to entry.

Look to the base of the trees that stand tall and stay green year-round.

# *Riverbox of the Sun*

by artist Ron Hirschi



**DUBLIN ARTS CENTER  
7125 RIVERSIDE DR.**

Plenty of parking is available; check with DAC for hours of operation. (You may park in driveway if gate is closed.)

**PARKING  
COORDINATES:  
N 40° 06.735'  
W 083° 06.661'**

**GPS  
COORDINATES:  
N 40° 06.763'  
W 083° 06.695'**

*Riverbox of the Sun*  
~STAMP~



## CLUES

- Park and walk to where art livens Dublin all year long.
- Take a leisurely stroll in the direction of the setting sun.
- Walk down the hill.
- Look at the base of what was once the grandest tree in sight to find your prize.

# *The Riparian*

by artist Nathan Mayfield



## DUBLIN ARTS CENTER 7125 RIVERSIDE DR.

Plenty of parking is available; check with DAC for hours of operation. (You may park in driveway if gate is closed.)

**PARKING  
COORDINATES:**  
N 40° 06.735'  
W 083° 06.661'

**GPS  
COORDINATES:**  
N 40° 06.774'  
W 083° 06.726'



## CLUES

Park your car and walk west past the building known for the arts. Watch your step as you venture down the hill. Once you reach the river's edge, take a moment to enjoy the river and wildlife. Search for a concrete triangular form at the base of the "V-shaped" tree."

*The Riparian*  
~STAMP~

# Big Turtle

by artist Margaret McAdams

**SCIOTO PARK  
7377 RIVERSIDE DR.**

Plenty of parking is available.  
Dublin parks are open dawn to dusk.

**PARKING  
COORDINATES:  
N 40° 07.012'  
W 083° 06.709'**

**GPS  
COORDINATES:  
N 40° 07.008'  
W 083° 06.730'**

**GC CODE:  
GC8KT24**



## CLUES

Park your car down below,  
by the shelter house.

Make your way toward  
the river, to the rocky knoll,  
where vegetation grows three  
seasons out of the year, and  
there you will find what you  
are seeking.

*Big Turtle*  
~STAMP~



# House of Spirits

by artist Mark Soppeland

**SCIOTO PARK**  
**7377 RIVERSIDE DR.**

Plenty of parking is available.  
Dublin parks are open down to dusk.

**PARKING  
COORDINATES:**  
N 40° 07.019'  
W 083° 06.665'

**GPS  
COORDINATES:**  
N 40° 07.068'  
W 083° 06.635'



**GC CODE:**  
**GC9R8AC**



## CLUES

Park in the middle lot next to  
Leatherlips.

Walk straight ahead, toward the  
conifer of steel.

Walk past the black cage to the edge,  
then take the path to the right.

Go up the slope, until you see the  
House on your left.

*House of Spirits*

~STAMP~

# Caementum Charta (CeeCee) II

by artist Thomas Ansel



**DONEGAL CLIFFS PARK  
4460 DONEGAL CLIFFS DR.**

Park open dawn to dusk.  
Limited parking.



**GC CODE:  
GC8KM5B**

**PARKING  
COORDINATES:  
N 40° 07.544'  
W 083°06.898'**

**GPS  
COORDINATES:  
N 40° 07.554'  
W 083° 06.846'**



*Caementum  
Charta (CeeCee) II*

~STAMP~



## CLUES

- Park in the lot next to where the children play.
- Pass the park and turn left through the gate down the road to the river.
- Continue to the loop in the road.
- Continue northward onto the unpaved path and walk forward several paces.
- Look to the west for a small natural path, then head toward the Donegal Cliffs to find the skyward face.

# Soft Rock

by artist Andrea Myers



**DONEGAL CLIFFS PARK  
4460 DONEGAL CLIFFS DR.**

Park open dawn to dusk.  
Limited parking.

**PARKING  
COORDINATES:  
N 40° 07.544'  
W 083°06.898'**

**GPS  
COORDINATES:  
N 40° 07.501'  
W 083° 06.910'**



## CLUES

- Take the path south from the parking lot.
- Follow the curve around to the right.
- 8 rocks around the bend.
- 1 doesn't belong.

# House of the Rising Water

by artist Helma Groot

**AMBERLEIGH NEIGHBORHOOD  
PARK ENTER PATH NEAR HOME AT  
4805 CARRIGAN RIDGE CT.**

Follow the street to the end of the culdesac to enter the path. Please be courteous and respectful of residents.

**PARKING  
COORDINATES:  
N 40° 07.977'  
W 083° 07.066'**

**GPS  
COORDINATES:  
N 40° 07.993'  
W 083° 06.983'**



**GC CODE:  
GC2DQAP**

*House of the Rising Water*

~STAMP~



## CLUES

Follow the path along the manicured park area.

Continue across the bridges... down, down the stairs toward the river.

At the very base of the stairs, stop and look underneath the path you just traveled.

# Sentinel

by artist Anthony Bible

## INDIAN RUN MEADOWS PARK 6675 FALLEN TIMBERS DR.

Park open dawn to dusk. Park on the street in the neighborhood, being respectful and courteous of residents.

**PARKING  
COORDINATES:**  
N 40° 06.567'  
W 083° 09.113'

**GPS  
COORDINATES:**  
N 40° 06.545'  
W 083° 09.073'



**GC CODE:  
GC6TB7M**

*Sentinel*

~STAMP~



## CLUES

Look for a path that will lead you between houses and into the meadows.

Move forward on the path until you can continue right or left.

Do neither.

Instead, look to your right at the trees that keep their leaves year-round.

Could something be hiding beneath them?

# Among the Wildflowers

by artist Katlin Shae

## TED KALTENBACH PARK 5985 CARA RD.

Parking is plentiful at the Washington Township Community Center. Washington Township parks are open 9 a.m. – sunset.

PARKING  
COORDINATES:  
N 40° 04.640'  
W 083° 09.312'

GPS  
COORDINATES:  
N 40° 04.665'  
W 083° 09.001'



GC CODE:  
**GC5MJAY**

*Among the Wildflowers*

~STAMP~



## CLUES

Enter the path around the court where you can make two (or three) points.

Stay on the path with the trees to your left, past the nets on your right.

Continue toward the reddish roof and stop to enjoy the ladder... "One Step at a Time."

Continue toward the pine trees and stop at the white fir, then look toward where the sun rises.

# COMPLETE YOUR CHALLENGE

To receive a geocoin or pathtag, fill out the information below and bring your completed passport, printed insert and/or Adventure Lab app to Dublin Arts Council, 7125 Riverside Dr., Dublin, Ohio 43016 during business hours.

If after hours or on weekends, mail your passport, insert or screen grab from the completed Adventure Lab to Dublin Arts Council and we will mail your geocoin and/or pathtag(s) to you.

Name: \_\_\_\_\_

Email Address (optional\*): \_\_\_\_\_

Street Address: \_\_\_\_\_

City: \_\_\_\_\_ State: \_\_\_\_\_ Zip Code: \_\_\_\_\_

*\* If you provide your email address, we'll keep you up to date on all of the things happening at Dublin Arts Council!*

## OUR MISSION

Dublin Arts Council engages the community, cultivates creativity and fosters life-long learning through the arts.

## STAY CONNECTED

Dublin Arts Council provides free community programming all year round. Details at **[dublinarts.org/riverboxes](https://dublinarts.org/riverboxes)**



DublinArtsCouncil



DublinArts

#DACriverboxes



## WHAT IS A GEOCOIN?

A geocoin is a special coin created by individuals or groups of geocachers as a kind of signature item or calling card. Each geocoin is assigned a unique tracking ID which allows them to travel from geocache to geocache or to be passed amongst friends, picking up stories along the way.

The Dublin Arts Council's Riverbox Geocoin and pathtags was created by geocoin designer Christian Mackey. He's a self-proclaimed Geocoin addict. Since 2006 he has designed numerous geocoins and is author of the book "Discovered: Memoirs of a Geocoin Designer."





## RIVERBOXES™ CHALLENGE PATHTAG

This Pathtag is split by the teardrop spire of the bridge with the badge of the Dublin clover inlaid at the base. The West side features agriculturally-based icons like smithing and farming over half recessed rows of fields. The East side includes mechanical and electrical inspired icons over the grid system of new order. The entire outer ring includes a half-recessed steel cable pattern (representing the ties linking the bridge to both sides) holding it all together. This shiny gold tag with trans green overlay represents agriculture and the original green digital code at the birth of computer tech. The gold has multiple means as a symbol of success, malleability and enduring value.

### TRADE & COLLECT

Connect with friends from around the world to collect and trade Pathtags. Features like our trade manager, online collection, PathCash, and more make trading by mail and in person easy and fun! Make a tag and experience the true excitement of a mailbox full of Pathtags from around the world!

**Learn more at [Pathtags.com](http://Pathtags.com)**

### WHAT IS A PATHTAG?

Pathtags are user-created art turned into high quality metal tags. Mainly used as trading and swag items for Geocaching, Pathtags have found their way into a whole host of places like scouting, military, schools, clubs, and more.

**Log your tag at [Pathtags.com](http://Pathtags.com)**



## DUBLIN LIMERICK ADVENTURE PATHTAG

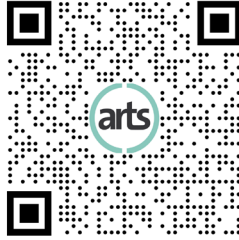
The Dublin Limerick Adventure Pathtag features a quad knot as a half-recessed underlay below an amber translucent enamel (over silver – a common celtic symbol of purity) to compliment the emerald green trans of the Pathtag. Each of the quadrants are said to represent the four elements ... Earth, Air (the pathtag hole of course), Water and Fire are represented as compass points. The Triskel is most commonly known as a symbol for travel and perpetual movement, central to tag design, with a repeating border of clover in a wheel around the outer rim.



## EXPERIENCE THE DUBLIN LIMERICK ADVENTURE

Use Geocaching.com's Adventure Lab app to discover little-known sites in Downtown Dublin Ohio, USA. Solve the five-line limerick, learn about Dublin's history and connection to Dublin's award-winning Art in Public Places collection.

Learn more at [dublinarts.org/limerick](http://dublinarts.org/limerick). Complete the challenge to earn the Dublin Limerick Adventure Pathtag.



DAC's *Riverboxes*, original public artworks, are placed discreetly in Dublin parks with access or relation to the Scioto River. The *Riverboxes* project is modeled after the popular pastimes of letterboxing and geocaching.

*To learn more about the hobbies of letterboxing and geocaching, or to find clues to the locations of other letterboxes and geocaches, visit: [letterboxing.org](http://letterboxing.org), [atlasquest.com](http://atlasquest.com), [geocaching.com](http://geocaching.com)*

Ongoing support for Dublin Arts Council is received from the City of Dublin's hotel/motel bed tax endowment, Ohio Arts Council, The City of Dublin Parks and Recreation Department and the Dublin Historical Society have collaborated with Dublin Arts Council in the project's development.





dublin  council

7125 Riverside Dr., Dublin, Ohio 43016 • 614.889.7444

Riverboxes Ambassador  
Mandi Strapp  
[msmandi@dublinarts.org](mailto:msmandi@dublinarts.org)